

- HOME
- NEWS
- ARTICLES
- MAGAZINE
- WHITEPAPERS
- WEBINARS
- EVENTS ▾
- CONTENT HUBS
- DIGITALISATION
- FREIGHT
- INFRASTRUCTURE
- REGS & LEGS
- ROLLING STOCK
- SAFETY & SECURITY
- SIGNALLING & TELECOMMS
- SUSTAINABILITY
- THE PASSENGER



ARTICLE

# Swedish railway industry and global evolution of digital signalling systems

Pia Lagerlöf, General secretary for SWEDTRAIN and Per Olofsson, Thought Leader and Training Officer at Bombardier Transportation, explore how the Swedish rail industry is actively exploring how rail control systems can evolve to enable increased capacity and efficiency.



Most popular...

Siemens Mobility submits bid for UK HS2 rolling stock contract



## The birth of the microprocessor: A quantum leap

In today's modern society, computer-based technology can often be taken for granted, yet on 15 November 1971, a simple advertisement<sup>1</sup> about the world's first commercially available microprocessor started a revolution: The INTEL 4004 and its amazing 2,250-transistor chip represented a quantum leap for railway signalling.

The Swedish rail industry was quick to adopt the new microprocessor-based equipment and fully electronic interlockings soon replaced traditional signalling safety technology. Following this positive development, SJ decided to evaluate the merits of replacing relay interlockings with computer-based alternatives to significantly reduce the cost and project time involved by installing more compact equipment.

The world's first Computer-Based Interlocking (CBI) entered revenue operation in May 1978 in Gothenburg. It replaced 16 conventional interlockings and controlled 1,169 signals and turnouts. The first Swedish ATP began operation in 1980 and soon became the industry standard.

Denmark's first high-speed rail line officially inaugurated

Hitachi and Bombardier submit bid to build HS2 trains

Bombardier and Hitachi to supply Italy with new Frecciarossa 1000 trains

Satellites and drones to support railway infrastructure maintenance



Read the latest issue

All subscriptions include online membership, giving you access to the magazine and exclusive content.

SUBSCRIBE TODAY

By [Per Olofsson](#), [Pia Lageröf](#)

10 June 2019

[No comments yet](#)

## On-demand webinar: Next generation of spares services by a new online marketplace and advanced 3D parts

In this webinar Siemens Mobility GmbH discussed an online marketplace for every material requirement and 3D printing.

[Click here to watch now](#)

The late Bengt Sterner, the legendary global signalling expert at SJ, commented on the introduction of microprocessors in railway control as a "small step for a signal engineer but a giant leap for railway technology", paraphrasing astronaut Neil Armstrong.

Sterner and Bombardier were both deeply involved in the transformation of signalling from relay to electronic technology. Sterner was the driving force behind increasing safety and reliability by achieving an accurate redundancy in railway signalling electronic systems. By the late-1970s he had introduced a 3D geographic model that represented the railway network and developed STERNOL, the fundamental language for programming interlocking algorithms. It was also under his leadership that the System Requirement Specification (SRS) for the European Train Control System (ETCS) was written.

## Behind the digital hype: The next steps in optimising the flow of trains

Fully understanding rail control processes, operational traffic scenarios and the associated tasks are essential for suppliers seeking to build the next generation of smart systems.

Pre-test functions have been in use since 1979 to ensure that a desired train path can be made available. A function that contributes to the accuracy of a train schedule can increase capacity and optimise traffic flow. These functions can be further refined to match any type of interlocking.

In the near future, interlockings will be replaced by on-board solutions. This evolution is a necessity and will facilitate the introduction of platooning or virtual coupling as well as the use of Automatic Train Operation (ATO) in railways.

SHARES

1



ISSUE

[Issue 3 2019](#)

RELATED TOPICS

[Automation, Digitalisation, Signalling & Telecommunications, Technology](#)

RELATED ORGANISATIONS

[Bombardier Transportation, SWEDTRAIN](#)

RELATED REGIONS

[Sweden](#)

RELATED PEOPLE

[Per Olofsson, Pia Lagerlöf](#)

Additionally, track circuits and axle counters will not be considered detailed enough and will become obsolete. We are interested in each train's precise position and footprint and what the train ahead is doing, speed, braking, accelerating etc., is information which needs to be calculated and transmitted to the train behind, which implies the need for more onboard intelligence. Hence the next Train Management Systems (TMS) will be intelligent, once it is fed with footprint information of individual train performance, it will be able to analyse the mobility within the system and mitigate any possible situation which may result in a delay.

The technique relying on footprint information is well-known and has been used in Communication Based Train Control (CBTC) systems for driverless metro applications for several years.

The geographic principal, which corresponds to the network layout and associated objects, used in CBI and TMS will be maintained as it allows for easy extension of sites. Today these systems are extended to supervise larger areas, with regional to nationwide adoption.

Nodes in the rail network, such as turnouts, will be operated when required via radio from either the approaching train or from the train management centre, depending on the required type of train path. Level crossing activation is also made via radio-based communication on the position and speed of each individual train.

## The railway operates like a machine

A railway network's operation can be compared to a complex machine, and all components of any machine are dependent on each other. Problems can easily arise because everything is connected, so it is important to be able to understand those connections. As we know, delays at one point on a rail network can easily ripple through to the other end, causing challenges in managing and mitigating accumulated delays.

Therefore, to predict delays, networks need smarter algorithms that can crunch larger amounts of data.

Data can be made available from various sub-systems, such as infrastructure, energy, rolling stock, trackside control-command and signalling as well as from on-board control-command and signalling, operation and traffic management and even maintenance.

Each train's performance can be tracked as every train in the system is an individual with its own unique performance, for example different speed, traction force, axle load, weight, train resistance, acceleration and deceleration capability, but also its driver's performance. Thanks to this information, delays can be prevented from spreading across a network by proactively identifying the risk of delays and improving instructions for alternative meeting points.

In addition, variations in the geometry of lines influences a train's mobility patterns. The interaction between wheel and track has a great effect on maintenance intervals and cost for both vehicles and permanent way. Continuously adjusting a train's maximum speed is key to conserve energy, for example optimising speed in curves and continuously adjusting it to negotiating changes in radius and can improve passenger comfort while reducing total maintenance cost.

Furthermore, using data from track sensors to adjust/modify permitted speed and ATP-braking capacity, based on rail friction coefficients and vibrations created in the track, subgrade and/or structures such as bridges, is another way to open new opportunities.

## Challenges and possibilities

The hardware required to conceive applications for these systems is at the very early stages of development. Ongoing research will bring greater possibilities for delivering these digital solutions.

There is also a shortage of skilled engineers and developers available to the rail industry. People who are able to conceive these applications are not common as designing these systems requires individuals with a solid understanding of rail processes and rail control, and how to use it to create more value for the customer. Competition with other industries vying for skilled engineers is a challenge for rail.

**Signalling** systems rely on a lot of information and data. As rail networks expand in size and complexity, an ever-increasing amount of data needs to be computed. Artificial intelligence techniques can learn how to process more data while algorithms can predict when a locomotive or a signalling subsystem will require maintenance.

In most cases, closed systems are preferred but data can be retrieved from outside sources if necessary, which may create cyber-security issues as transmission networks and storage are not always 100 per cent secure. For example, GPS systems are notoriously easy to disrupt. Techniques for securely migrating rail network business to the Cloud may not be safe enough. We must be certain

that any software being introduced across various subsystems does not include hidden vulnerabilities that can be remotely activated by malicious third parties. Our customers must always maintain and be in complete control of their train's movements.

The objective is to build smarter solutions for better travel time precision, energy savings, lower maintenance cost, increased speeds as well as for improved line capacity and headway.

## The ongoing digitalisation

SWEDTRAIN, the association for Rail Industry Companies in Sweden, is fostering the legacy of the Swedish railway by advocating the evolution of rail control systems in order to be a system that increases capacity and efficiency while at the same time optimising resources to achieve improved punctuality and a reduced environmental footprint. The final goal is a system which is built for international implementation from a new generation of [signalling](#) products, which can then be used on heavy traffic mainlines with major stations as well as on single lines outside the main corridors. Artificial intelligence, smart communication, IoT and thinking outside-the-box will empower us to conceive and operate sustainable rail transportation networks for many generations to come.

## References

1. Published in Electronic News magazine

## Biography



Pia Lageröf, M.Sc., has been managing the Swedish Association of Railway Industries for the last five years. She has a good general overview of the railway system, its opportunities and challenges. Furthermore she has experience from working at the consultant company ÅF with product development and as an engineer within

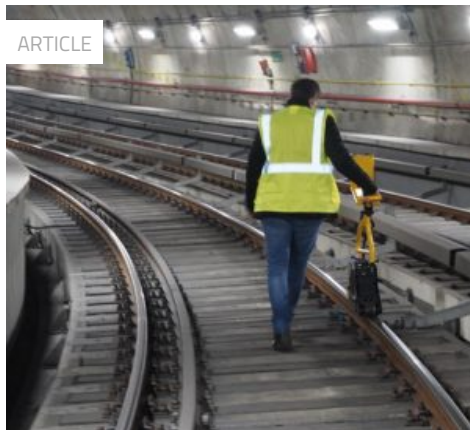
[Bombardier](#) Transportation.



Per Olofsson has vast experience in the Rail Industry, working on system as well as product level for railway and mass transit operation. Engaged in several organisations for example IRSE, Fellow Permanent Way Institution and elected Chairman for the Railway Signalling Technology Advisory board at the Royal Institute of Technology (KTH) he is

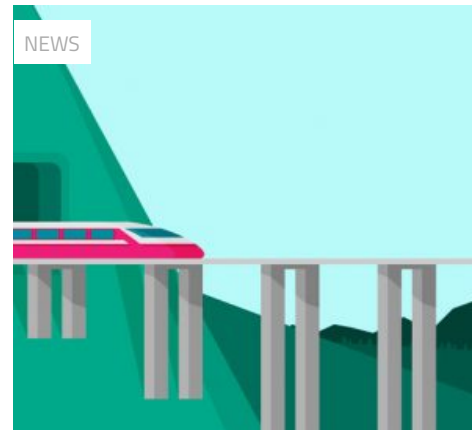
recognised as a thought leader in the industry, and has diligently been working on addressing the shortage of competent resources in the field of railways and mass transit rail world-wide.

## RELATED CONTENT



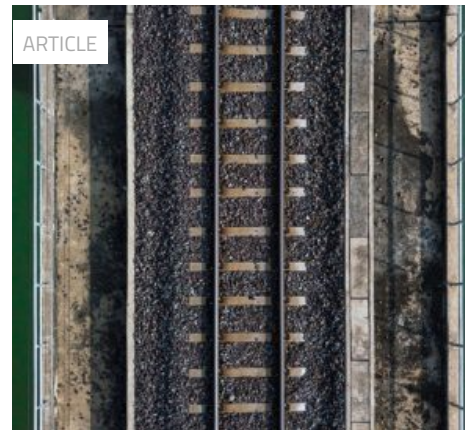
Rail Performance Monitoring: Paving the way for advanced track solutions

By Johannes Wundersamer



European Commission study highlights greater role of European rail

By Global Railway Review



Satellites and drones to support railway infrastructure maintenance

By Valeria Donzelli (MOMIT)



Implementing a development strategy to ultimately benefit passengers

By Miha Butara (Slovenian Railways)

---

## Leave a Reply

Your email address will not be published. Required fields are marked \*

**COMMENT**

**NAME \***

**EMAIL \***

**WEBSITE**

POST COMMENT

This site uses Akismet to reduce spam. [Learn how your comment data is processed.](#)

**CONTENT**

- News
- Industry Insights
- Articles
- Magazine
- Whitepapers
- Webinars
- Events
- Company Profiles

**TOPICS**

- Digitalisation
- Infrastructure
- Regulation & Legislation
- Rolling Stock
- Safety & Security
- Signalling & Telecomms
- Sustainability
- The Passenger

**ADVERTISING & EDITORIAL**

- Advertising Opportunities
- Advertising Tech Specs
- Advisory Board
- Information for Authors
- Media Planner

**COMPANY INFORMATION**

- Global Railway Review is published by:  
Russell Publishing Ltd.  
Court Lodge  
Hogtrough Hill  
Brasted, Kent, TN16 1NU  
United Kingdom
- About
  - Terms & Conditions
  - Privacy Policy

WRITE FOR US | ADVERTISE WITH US

**CONTACT**

**REGISTER**

T: +44 (0)1959 563311  
F: +44 (0)1959 563123



